



**GREEN ACRES**  
GOLF CLUB • KEW

Official Club Brochure 2023 | 2024

# QUINN & CO. EYECARE

See Well, Live Well – In Style



## IS YOUR VISION IMPACTING YOUR GOLF?

There are many different aspects to your golf game and whether it's club selection, your swing or perfecting your putt, each nuance can affect your overall score. But there's another factor that not only affects each aspect of your game, but your everyday life as well – your vision.

Uncorrected vision problems not only impact your day-to-day life, but can wreak havoc on the course.

At Quinn & Co. Eyecare, our goal is to help you see well so that you can live well and do it in style.

We provide comprehensive eye examinations and personalised, high-quality eyewear, including the latest frame and lens technology from Oakley, to suit your lifestyle... and hopefully improve your golf!

From hitting the ball down the fairway, to allowing for a more natural head posture in the intermediate zone and a near zone for filling out the score card, the Oakley golf specific progressive lens uses proprietary technology to deliver lenses specifically designed for golfers.

## BOOK AN APPOINTMENT AT OUR KEW PRACTICE

212 High Street Kew (formerly High On Vision) by calling 03 9853 6474  
or online at [quinnandcoeyecare.com.au](http://quinnandcoeyecare.com.au)

Green Acres Golf Club and Premier Publishing wish to thank the advertisers who appear in this publication for their support and wish them every business success. The contents of this brochure are believed to be correct at the time of printing, nevertheless, we cannot endorse and readers should not rely solely upon the accuracy of any statements or claims contained herein without prior consultation with the service provider.



**A** 14 Ellis St, South Yarra VIC 3141  
**T** 03 9028 5704  
**E** [info@premierpublishing.com.au](mailto:info@premierpublishing.com.au)  
**W** [www.premierpublishing.com.au](http://www.premierpublishing.com.au)

## CONTENTS

Welcome .....	1
A Brief History .....	4
The Course .....	6
Tour the Course .....	8
Golf Centre .....	15
Tuition .....	16
Becoming a Member .....	19
The Green Acres Advantage .....	26
Reciprocal Golf .....	27
Members' Golf .....	29
Women's Golf .....	31
Juniors .....	34
Clubhouse & Catering .....	35
Weddings & Functions .....	38
Corporate Golf Days .....	42
Corporate Membership .....	44
How to Find Us .....	46
Contact Us .....	47



# WELCOME To Green Acres Golf Club

Green Acres Golf Club offers an idyllic golfing location just 15 minutes from the Melbourne CBD in the leafy suburb of Kew East.



Set in a tranquil bushland location on the banks of the Yarra River, our 18-hole layout features tight tree-lined fairways, challenging doglegs and natural water hazards.

A private course, Green Acres is presented in immaculate condition all year round with couch fairways and bent grass greens. Stretching to 5,961 metres from the Blue Championship Tees, it offers a fair and invigorating challenge for all standards of golfer.

Our Clubhouse features panoramic views over the golf course and well-appointed rooms for both private and

business functions and offers a spacious and relaxing home away from home for our Members. Green Acres is regarded as one of the premier golfing and function facilities in the region and we are a favourite destination for weddings, parties, and conferences.

We have a range of Membership categories and account payment options and have thriving Women's and Juniors sections who are integral parts of the Club.

Our Golf Centre has a comprehensive range of equipment and apparel and is staffed by qualified professionals who will assist with all your golfing requirements. There is also a purpose-built indoor teaching facility enabling you to get the most from your game.

*We look forward to welcoming  
you to our friendly Club.*





# BEYOND TOMORROW TODAY

Tomorrow's success starts today  
with forward thinking and a  
holistic approach

**Stones Sharp are more than just accountants, we aim to provide our clients with timely practical management and taxation advice that suits our clients' business and individual needs.**

Personalised relationships with our clients are important to us to ensure we deliver tailored advice when you need it. For over 80 years our clients have trusted Stones Sharp as their business partner and mentor, always thinking beyond tomorrow, today.

📍 Level 2, 35 Cotham Rd, Kew VIC 3101

☎ +61 3 9853 0641

✉ info@stonessharp.com.au

[www.stonessharp.com.au](http://www.stonessharp.com.au)

Liability limited by a scheme approved under Professional Standards Legislation



## A Brief HISTORY

Green Acres Golf Club was formed in July 1948 on 44 hectares of the former Willsmere Dairy Farm land on the banks of the Yarra River at Kew East, purchased from the Brooksby Family for £18,400.

From a foundation membership of 239, the Club has grown to embrace more than 1,300 members. The name "Green Acres" was put forward in 1947 by Gordon Bernard Oliver, who conceived the idea of building a golf course on the site, based on his expectation that the bordering Yarra River would enable the course always to be kept green. Over the years, with brief exceptions, he has been proved right.

On occasions, particularly in the 1950s and 60s, the Yarra has been over generous and inundated the course - sometimes requiring swift action to prevent part of the course falling into the river. Flood control measures by the Melbourne Water in the river's upper reaches has reduced the impact in recent years with the notable exception of 2004 and 2005 when the course was flooded twice.

Since the then Governor, Sir Dallas Brooks, played the first stroke in December 1950, the Club has fulfilled its role in the Victorian golfing community.

Apart from winning numerous Men's and Women's pennants in inter-club competition, Green Acres has hosted the annual Boroondara Cup in conjunction with neighbouring Kew Golf Club, the Yarra Courses Open and many Golf Australia sponsored events.

Since 1961 charitable activities have raised in excess of \$1million for local charities.







Lawyers for business people



**At Scanlan Carroll, we are big enough to practise over many areas but small enough to offer our clients personal attention. We pride ourselves on being efficient, transparent and communicative. We will always keep you updated on your matter, and we aim to exceed your expectations.**

We believe in fostering lifelong relationships with our clients. Since we started practising in Kew more than 30 years ago, we have built a proud record of developing family relationships, some of them spanning two and three generations.

Bringing a commercial focus to all matters, we have award winning lawyers and Victorian Law Institute Accredited Specialists in Commercial Law, Family Law, and Wills and Estates.

**If you need assistance with any of your legal matters, or simply have an enquiry, contact one of our friendly solicitors.**

## OUR SERVICES

### Commercial Law:

- General business advice
- Insolvency and Preference Claims
- Structure advice and Asset Protection
- Business to Business Agreements
- Business sale transactions
- Trust advice

### Family Law:

- Divorce
- Property divisions
- Children's matters
- Financial Agreements

### Employment Law:

- Redundancy or performance management advice
- General Protections claims
- Unfair Dismissal
- Employment or Contractor's Agreements

### Estate Planning:

- Wills and Testamentary Trusts
- Powers of Attorney
- Succession planning
- Binding Death Benefit Nominations for Superannuation

### Probate and Estate Administration, and litigation:

- General Probate and Administration
- Part IV claims
- Leasing, retail and commercial
- Property Law and Conveyancing
- Dispute Resolution

## The COURSE

The course was designed by Gordon Bernard Oliver who, after designing the original course at Peninsula Country Golf Club, put forward the ambitious plan to build an American-style country club just moments from Melbourne's bustling heart.



Although much has changed since the original plans were drawn, the course maintains the character that Oliver was eager to create and is a legacy of his passion for tree-lined fairways, doglegs and natural water hazards.

With Legend couch fairways and Bent greens, the course presents itself in an immaculate condition all year round and provides members with both a sanctuary and a challenge. A pleasant walk is guaranteed even when the putts are not falling, with several holes running alongside Melbourne's iconic Yarra River and the course surrounded by towering gums that attract abundant wildlife.

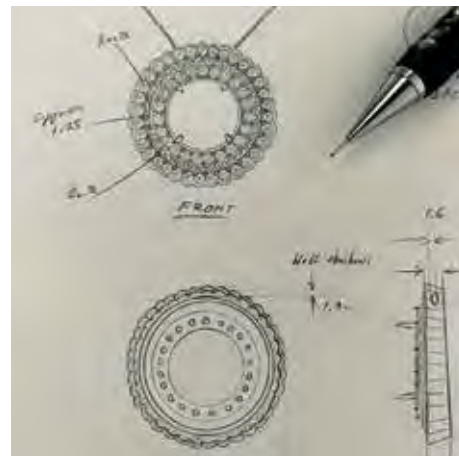
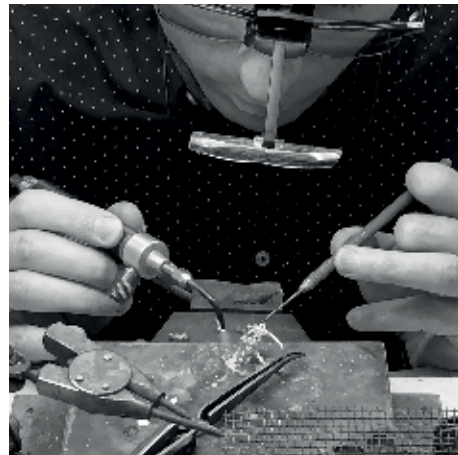
Perhaps still an undiscovered treasure to some, those who have played here cannot help but be captivated by the picturesque setting and the layout.

"With great variety across the 18 holes, you feel like you need to hit every shot at this tight and tough course," Andrew Maher, the leading Melbourne sports journalist and television commentator, said.

"Tree-lined fairways demand accuracy off the tee; lines of approach into greens mean position off the tee is as important as length. It's as much a test of your ability to think your way around a course as it is your ability to hit the ball."

# WATERDALE JEWELLERY

— Est 2000 —



## SERVICES:

Custom Design Service  
Re Modelling  
Restoration Work  
Repairs  
Pearl Threading  
Diamond, Sapphire  
Emerald and Ruby Specialists  
Gem Re Cutting

## CONTACT US:

94972188  
admin@waterdalejewellery.com.au  
Shop 1 - 145/147  
Upper Heidelberg Road  
IVANHOE 3079

[www.waterdalejewellery.com.au](http://www.waterdalejewellery.com.au)

## Tour the COURSE

We hope you enjoy your time with us at Green Acres Golf Club. Here are a few useful tips and course notes which should help you make the most of your round if you have never visited us before. Yardages shown are from the men's tees.



### HOLE 1, 318 METRES, PAR 4

A short straight downhill par 4 that is reachable for very long hitters. Two fairway bunkers starting at the 220-metre mark and three greenside bunkers add complexity to this hole. The safe play from the tee is to hit a long iron and lay up short of the fairway bunkers. The second shot will require a short iron into a large, mostly flat green.

### HOLE 2, 364 METRES, PAR 4

The second hole is a long par 4 that doglegs to the right. Play to the left side of the fairway but avoid the fairway bunker. The second shot is a challenge and it usually requires a mid to long iron. Bunkers protect the green and errant shots left may find the Yarra River. The green is quite large with a gentle slope back to front.





# 1 RENTALS

SPECIALISTS SINCE 1977

*“With Colin Knight Real Estate, you don’t just get a property manager, you get a team of experts.”*



[www.colinknight.com.au](http://www.colinknight.com.au)  
Phone number: 9859 8746

**COLIN KNIGHT**  
REAL ESTATE



## HOLE 3, 460 METRES, PAR 5

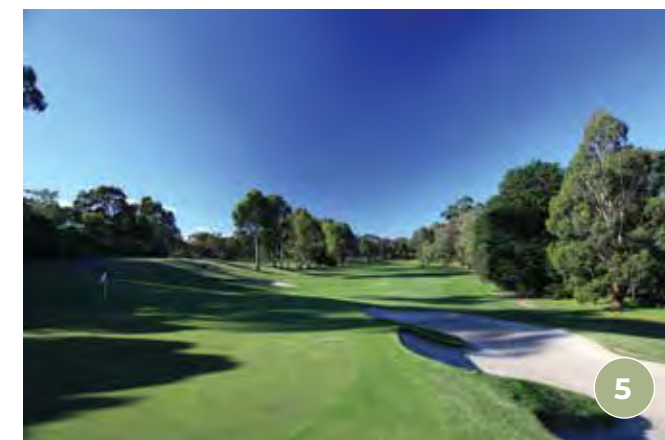
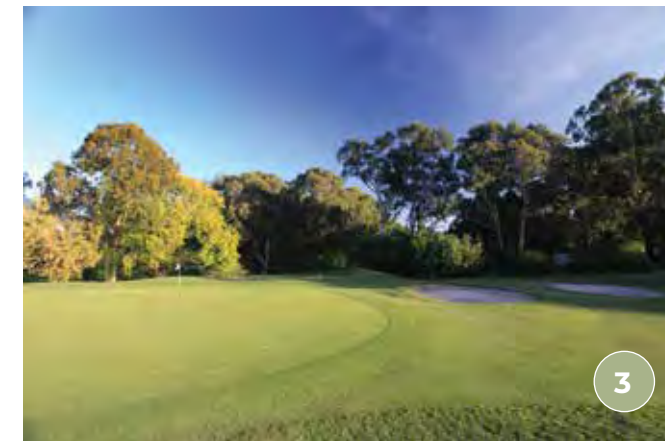
Relatively straight par 5 with out of bounds down the left side and water on the right for long hitters. The fairway itself is lined by tall gums which can make the hole look daunting. The drive from the tee is out of a narrow chute and is the key to setting up the next shot. The second shot landing area is however quite narrow. The large back-to-front sloping green is protected by bunkers on the right, out of bounds at the back and depressions to the left.

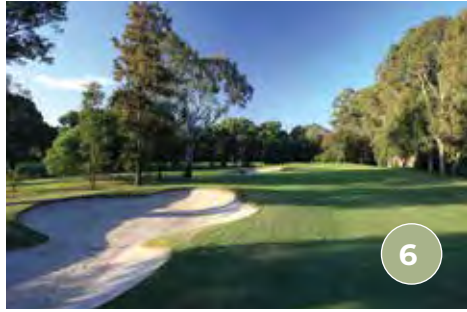
## HOLE 4, 185 METRES, PAR 3

The fourth hole is a long, picturesque par 3 with water in front of the tee and out of bounds on the left. The green is large, sloping from back to front and protected by three greenside bunkers. Wide shots right will find water. Short hitters can run their ball to the green free from any trouble.

## HOLE 5, 350 METRES, PAR 4

From the tee the fairway looks wide, however it is well protected by bunkers to the left and both trees and water to the right. An errant shot down the left will be out of bounds. The shot to the green needs to be precise with consideration given to the pin position relative to the right-hand sloping bank.





6

#### HOLE 6, 420 METRES, PAR 4

The hole is one of the most difficult on the course and plays as a par 4 for men and par 5 for women. From the elevated tee the fairway doglegs to the right around a large water hazard which goes all the way to the green. The ideal position from the tee is left-hand side of the fairway. This will leave a long iron or fairway wood to a large green. The water on the right will claim any wayward shots. The green slopes from back to front and is protected on the left by two large bunkers, one short of the green and a further one greenside.

#### HOLE 7, 338 METRES, PAR 4

Short par 4 that has a sharp dogleg around a large water hazard. Long hitters can try to go over the tall gums and water to the green. A less risky option is to play a shot to the fairway left of the water



7

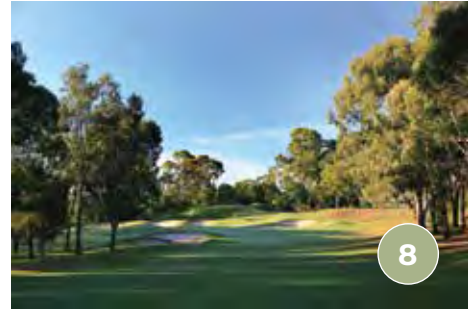
leaving a mid to long iron to the green. The green has a severe slope left to right and is protected by mounds and hollows front and left and bunkers to the rear and right. Don't be long through the green.

#### HOLE 8, 460 METRES, PAR 5

From the tee, don't be right as you will find yourself blocked out for your second shot. The best line is slightly left of centre of fairway. The second shot needs to be accurately placed to avoid fairway bunkers left and right. The approach shot to the green is made difficult by the elevation, bunker protection, and depth of green.

#### HOLE 9, 112 METRES, PAR 3

This short par 3 is well protected by bunkers front right and back left. Club selection to this large two-tiered green is critical.



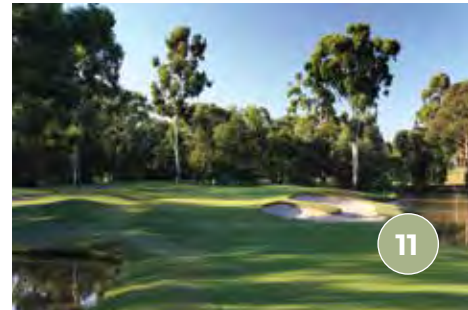
8



9



10



11

#### HOLE 10, 350 METRES, PAR 4

From the tee the fairway is quite open, but a steep slope borders the left-hand side and on the right is a water hazard which will be found by stray shots. A fairway bunker on the left can capture tee shots. The second shot is all uphill to an elevated green which is well protected by bunkers left and right. Any shot short of the green will run away severely to the right. The green is large with a tier through the middle.



12

#### HOLE 11, 153 METRES, PAR 3

This is an excellent par 3 - any shots not on the green are bound to find trouble. The green has water hazards both left and right with bunkers on the right and grassy hollows front and left. Through the green and you will find trees. The green is large, long and two tiered with a narrow front requiring an accurate shot to get close to the pin.

#### HOLE 12, 332 METRES, PAR 4

A relatively short but challenging dogleg left par 4. At the corner, large bunkers await to the left, whilst

sloping ground and more bunkers can be found to the right. The second shot, over a small hill and down a right-to-left slope, can be semi-blind but a short iron is normally all that's needed. The green is protected by bunkers left and right whilst severely wayward shots to the left may find the Yarra River. Don't be long as the ball which rolls through the green will go down a steep slope and most likely find trouble.



13

#### HOLE 13, 378 METRES, PAR 4

This straightforward par 4 for men and par 5 for women has length and a fairway lined with large gum trees. The tee shot is over water with the ideal position being slightly left of centre fairway. Drives to the right may find the second shot blocked out - to the left and you will be amongst trees and looking to get back on the fairway. The second shot normally calls for a long iron or fairway wood. The approach to the green has the fairway dipping into a hollow giving the impression it is closer than it really is. The green is guarded on





14

the right by a large bunker and on the left by grassy hollows. Balls played through the green will find the Yarra River.

#### HOLE 14, 480 METRES, PAR 5

Long par 5 with the Yarra River running its length along the right-hand side. A series of four bunkers may capture tee shots to the right - the best position is centre of the fairway. The fairway is generous all the way to the green so second shots should be straight forward. The green slopes back to front and is protected by bunkers front left and right. The river runs around the back of the green so don't be long.



15

#### HOLE 15, 407 METRES, PAR 4

For the men, this hole is one of the longest par 4s on the course. For women it is a par 5. A long straight drive followed by another long straight shot is required. At the green, there are no bunkers but the surrounds slope away on the left and right-hand sides.

#### HOLE 16, 349 METRES, PAR 4

Challenging dogleg right with the corner 200 metres from the men's tee. Centre of the fairway is the preferred line - cutting the corner on the right will put you amongst trees with no shot to the green. The fairway is undulating, giving way to a significant hollow at about 150 metres. The large green is elevated and has deep bunkers front left and back left and right. The Yarra River runs close to the green at the back left. Shots hitting the green on the front right-hand side may roll off down a slope.



16

At Creative By Design we are proud to produce custom joinery for any room in the home, making each space more usable and pleasant to spend time in.

The team will work with you throughout the design, manufacture and installation journey to bring your dream to reality.

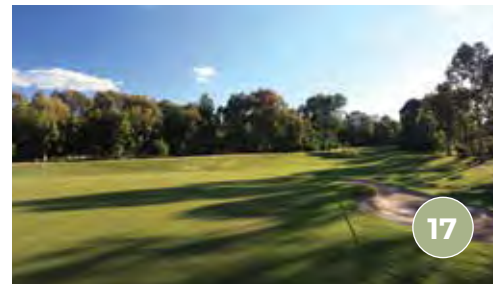


**CREATIVE  
BY DESIGN**  
BEAUTIFULLY FITTED FURNITURE

1300 366 222 | [creativebydesign.com.au](http://creativebydesign.com.au)

651 Burwood Road, Hawthorn East VIC 3123

WARDROBES DOORS LIVINGSPACES WALLBEDS GARAGES PANTRIES HOMEOFFICES LAUNDRIES



17

#### HOLE 17, 180 METRES, PAR 3

This long par 3 has the Yarra River running along its length on the right-hand side. The tee shot needs to be well struck and land on the elevated green centre or left - to the right and it may roll off down a slope. There is no trouble short of the green. Deep bunkers run the length of the left-hand side of the large green.



18

#### HOLE 18, 330 METRES, PAR 4

A relatively short narrow par 4 that curves to the right and climbs up a gentle slope. A good tee shot will leave you a mid to short iron approach. Shots to the left will find a severe embankment which may throw your ball back towards the green.

# Golf CENTRE

The Green Acres Golf Centre provides members and guests with the latest golfing equipment from some of the most popular manufacturers.



A unique feature of the Golf Centre is the newly-installed teaching studio and indoor hitting bays – each with the latest in Trackman golf ball tracking technology – which ensures that golfing equipment is individually fitted to suit your game and that tuition services can be provided year-round regardless of weather conditions.

Every golfer is unique in terms of their physical attributes and swing type. Our golf professionals use dynamic fitting, where they analyse your natural form on the range to determine the clubs best for you.

Tailoring a golf club to match an individual swing type ensures the club is square at impact to produce a long, straight shot. The end result should be a more consistent and repeatable swing, which brings with it added confidence about your golf game, a desire to play more and a real opportunity to lower your handicap and become the best player you can possibly be.

The Green Acres Golf Centre has a wide range of golfing hardware from all the leading brands, equipment, and apparel available at extremely competitive prices and also offers top-quality repairs to existing clubs.

Best of all, our knowledgeable staff have a wealth of experience in the industry, so your experience will be one to remember for all the right reasons. Check out our website, [www.greenacresgolf.com.au](http://www.greenacresgolf.com.au) for the latest products and special offers.

# TUITION

Green Acres Golf Club offers a range of coaching alternatives designed to suit your requirements and budget. For a tailored program designed specifically for your individual requirements, we recommend a one-on-one lesson with one of our PGA Teaching Professionals.



Our Teaching Professionals Mark Varela, Janette Borgolotto and Ashley Hall all use the latest computerised teaching aids that will analyse your game and allow you to visually compare your swing to that of professionals.

We certainly don't expect you to be swinging the club like the 'pros' after the first lesson, however golfers often find it very useful to see their swing for themselves and this is where video analysis proves so beneficial. Before long, we're confident that you'll be well on the way to playing more consistent golf and starting to shave strokes from your handicap.

For those wishing to work on their game, the Club has a number of practice facilities, including a practice tee overlooking the 10th fairway, high quality practice nets close to the 1st tee and the 10th tee, a practice area featuring chipping and putting green and bunker and a large practice putting green right next to the Clubhouse which mirrors the excellent surfaces to be found on the course.

Our Teaching Professionals provide both members and the golfing public with tuition services ranging from private individual lessons to group clinics and junior development programs.

Please contact the Golf Centre directly on (03) 9859 2338 to inquire about how you can improve your game.





# Living well with choice and peace of mind



## Help at home

Get assistance with personal and clinical care, household chores, assistive technology and transport



## Community support and wellbeing

Remain connected with social groups, outings, allied health and therapy services, seniors gyms, carer support and respite services



## Independent living

Maintain an independent lifestyle in one of our vibrant retirement living communities



## Residential care

Specialist 24/7 care and support, including dementia and palliative care, within a safe and caring community

With services across Victoria, Uniting AgeWell's expert, caring team can help you find the right services to meet your needs.

## Care and support tailored just for you with Uniting AgeWell



1300 783 435



[unitingagewell.org](https://unitingagewell.org)



Uniting AgeWell



# Becoming A MEMBER

If you love your golf and are looking to make new friends on and off the course, then you have come to the right place.



Green Acres is a true Members' Golf Club that exists for the benefit of its Members with continual reinvestment ensuring that the Membership experience is nothing short of exceptional.

The Club has much to recommend it: the picturesque golf course, well-appointed Clubhouse and, most importantly, the friendly and social atmosphere.

Traditional six and seven-day golf Memberships are by far the most popular, giving optimum access to the magnificent 18-hole championship golf course and a host of competitive playing opportunities. Members can also chart their continual improvement by gaining a Golf Australia handicap, recognised at golf clubs worldwide and make their bookings either in person in the Golf Centre, by phone, or online.



For those who find they are unable to get to the course as often as they would like there is still the opportunity to enjoy all the benefits of Club life with a range of flexible Memberships.

We limit Membership numbers to ensure that the golfing experience is never anything other than exceptional.

Membership categories include:

## **SEVEN DAY MEMBERSHIP**

Members may play every day, except for men on Tuesday and Thursday mornings when the Women's competitions are run.

## **SIX DAY MEMBERSHIP**

Members are entitled to play on Sundays and weekdays.

## **INTERMEDIATE MEMBERSHIP**

Designed for age categories 25-39 allowing play every day, except for men on Tuesday and Thursday mornings when the Women's competitions are run.

## **RESTRICTED MEMBERSHIP**

Permits restricted access to the course and allows a member to play up to 30 times per year, upon the payment of a discounted, self-introduced green fee. This category is often taken up by less experienced golfers or golfers that do not have a handicap. Restricted members are permitted to play on any day except Saturday or during the Tuesday Women's Competition.



## Sign with Confidence

At Synergy Insurance Brokers, we understand that sometimes you need simple insurance on the spot from someone you trust.

To protect your business you need an experienced Insurance Broker who understands the continually changing business risks in today's complex world.

Our experienced staff at Synergy Insurance Brokers will take the time to ensure we find the right cover for you, or we are pleased to offer free online insurance quoting.

Mention this ad  
and receive  
**50% off**  
your broker fees for  
the first  
**12 months**



Property & Business  
Income Insurance



Cargo, Marine, Aviation  
& Hull Insurance



Public & Products Liability,  
Product Recall Insurance



Construction, Contractors  
& Trades Insurance



Professional Indemnity IT  
Liability, Medical Malpractice  
Insurance



Car, Truck, Mobile Plant  
& Fleet Insurance



Directors & Officers Liability,  
Cyber Insurance



Travel, Home &  
Contents Insurance

Contact us today for a no-obligation insurance audit/review or  
quote for your business or personal needs



### SOCIAL NON-PLAYING MEMBERSHIP

Members have full rights to the Clubhouse facilities only.

### JUNIOR MEMBERSHIP

The Club actively encourages applications from young players and has a thriving Junior section. Please see elsewhere in this brochure for further information.

### CORPORATE MEMBERSHIP

Corporate Membership is now available. Please see elsewhere in this brochure for further information.

### TEMPORARY MEMBERSHIP

Temporary Membership is available to people who normally reside interstate or overseas.

Membership applications should be endorsed by a Proposer and Seconder who are current Club members. Alternatively, if you do not know any current members, external Referees will suffice and are only required if you do not know an existing member of the Club.

For more details about joining Green Acres, please call (03) 9859 1294 or view our website [www.greenacresgolf.com.au](http://www.greenacresgolf.com.au).





**GREEN ACRES**  
GOLF CLUB • KEW





## 13 highly trained Orthopaedic Surgeons

*Specialists helping you  
get back to life*

Surgeons at **OrthoSport Victoria**  
specialise in the following areas:

- ✓ Knee problems
- ✓ Hip problems
- ✓ Shoulder problems
- ✓ Foot & ankle problems
- ✓ Sports injuries
- ✓ Arthritis surgery
- ✓ Trauma & limb reconstruction
- ✓ Hand, wrist & elbow surgery
- ✓ Fractures & broken bones
- ✓ Joint replacement surgery



### Orthopaedic Surgeons

**Professor Julian Feller** FRACS

**Dr Cameron Norsworthy** FRACS

**Dr Timothy Whitehead** FRACS

**A/Prof Harvinder Bedi** FRACS

**Dr Robert Steele** FRACS

**Dr Geoffrey Tymms** FRACS

**Dr Rohan Price** FRACS

**Dr Andrew Oppy** FRACS

**Dr Jason Harvey** FRACS

**Dr James Canty** FRACS

**Dr Soong Chua** FRACS

**Dr Lachlan Batty** FRACS

**Dr Julia Kirby** FRACS

**Ph: 9038 5200**

## The GREEN ACRES ADVANTAGE

*Still wavering about becoming a member?*

Here are ten good reasons to join Green Acres:

1. Situated only 15 minutes from the Melbourne CBD and close to the surrounding suburbs of Kew, Balwyn, Canterbury, Camberwell, Hawthorn, Glen Iris, Surrey Hills, Burwood, Abbotsford, Collingwood, Richmond, East Melbourne, Bulleen, Doncaster, Box Hill, Heidelberg, Ivanhoe and Eaglemont.
2. Our golf course is a challenging 18-hole layout set in a unique and tranquil location on the banks of the Yarra River.
3. We are blessed with a healthy water supply that keeps our course in great condition all year round.
4. We have a range of Membership Categories and account payment options to suit your needs and endeavour to keep waiting periods to a minimum to ensure that you're enjoying the benefits of Membership as soon as possible.
5. We are financially secure with a history of recording healthy financial results that allow us to reinvest in the golf course and member services.
6. Our Golf Centre has a comprehensive range of equipment and apparel and is staffed by experts who can help with all your golfing needs.
7. We participate in Pennant programs for Juniors, Colts, Women, Men and Seniors.
8. We teach tomorrow's champions by holding regular Junior Golf Programs and Clinics throughout the year.
9. We have a long list of highly prized reciprocal clubs in Victoria and around Australia, New Zealand, Malaysia, and UK.
10. A spacious Clubhouse that boasts panoramic views over our golf course. Our Clubhouse is family friendly and is available for member private or corporate functions at very affordable rates.



# Reciprocal GOLF

Green Acres Golf Club has reciprocal relationships with a number of other golf clubs in Victoria, across Australia and around the world as a way of adding extra value to our Memberships.



Agreements vary from club to club. It is recommended that members check with the office prior to visiting a reciprocal club in relation to any special arrangements and regarding details of current participating clubs as the list is regularly updated.

The following reciprocal agreements are in place:

## NEW SOUTH WALES

Cobram-Barooga Golf Club  
Cromer Golf Club  
Murray Downs Golf &  
Country Club  
Tura Beach Country Club

## AUSTRALIAN CAPITAL TERRITORY

Yowani Country Club

## TASMANIA

Riverside Golf Club

## QUEENSLAND

Keperra Golf Club  
Southport Golf Club  
Mount Coolum Golf Club

## VICTORIA

Ballarat Golf Club  
Horsham Golf Club  
Riversdale Golf Club  
Spring Valley Golf Club

## NORTHERN TERRITORY

Alice Springs Golf Club

## SOUTH AUSTRALIA

Blackwood Golf Club  
Victor Harbor Golf Club  
West Lakes Golf Club

## WESTERN AUSTRALIA

Wanneroo Golf Club - Perth

## NEW ZEALAND

Boulcott's Farm Heritage Golf  
Club  
Christchurch Golf Club  
Miramar Links Golf Club  
Remuera Golf Club  
Russley Golf Club

## SRI LANKA

Royal Colombo Golf Club

## CHINA

Mission Hills – Shenzhen  
Yalong Bay Golf Club - Hainan  
Island

## MALAYSIA

Kelab Golf Negara Subang  
Tiara Melaka Golf and Country  
Club

## PHILIPPINES

Valley Golf and Country Club

## UNITED KINGDOM

Woking Golf Club

Discounted golf is also available  
at the six other courses who  
form part of the Yarra Courses  
Agreement.

See our website,  
[www.greenacresgolf.com.au](http://www.greenacresgolf.com.au)  
for further information.



# Members' GOLF

If you like competitive golf, Green Acres is a great choice of club. The Club can offer pennant play for Men, Women, Seniors and Juniors, together with a host of honour board competitions and more relaxed social golfing events.



Nothing beats pennant play and the Club has been a proud supporter of Golf Victoria's pennants for many years. 2017 was very fruitful with two pennant flags in Friday and Sunday Women's Pennant. Promotion and relegation between the divisions at the end of the season ensures that competition is keen right through the season, even if the chance of pennant glory has gone for that particular year.

Golfers over 55 (our Seniors) enjoy similar competition in the Men's Yarra Courses Senior Pennant competition, which features eight Yarra golf clubs doing battle over the course of a seven-week campaign. The Green Acres team were victors in 2022, and runners-up in 2023.

As well as the regular weekly competitions there are a host of honour board competitions to be fought for, each carrying an accompanying trophy, with perhaps the most prestigious in each section being the respective Club Championships.



Whether your favourite format is singles or pairs, strokeplay or matchplay, a one-day event to find the winner or a knockout competition running throughout the season you will find something to appeal at Green Acres. You do not necessarily need to be a scratch golfer, with a good selection of competitions run against handicap, meaning that everyone has a chance to get their hands on some silverware.

Green Acres is very much a family-oriented Club and this can be appreciated by some of the cups on offer, such as the Family Trophy, Grandfather's and Grandmother's Trophy.

Club competitions are held 7 days a week catering for Men, Women and Medley formats. A nine-hole Club competition is held on a weekly basis from Monday through Saturday after 3.00pm.

It's not all about winning, however. There are also plenty of opportunities for social golf for those who just want to get together and enjoy the course and the company of good friends.



With many tee-times available to Members outside slots reserved for competitions, there is plenty of opportunity for social play.

A very popular part of Club life during Daylight Saving are the Twilight Nine and Dines, which feature a social game of nine holes followed by a relaxed drink and a meal in the Clubhouse. The Twilight Nine and Dines take place each Wednesday and on some Fridays and it is here that you really get to experience the true camaraderie and friendly atmosphere that being a member of Green Acres Golf Club is all about.

We have an excellent rapport with many of our reciprocal clubs, none more so than Riverside in Tasmania, with whom we enjoy three days of competition and much socialising every November.

We alternate visits each year (Green Acres hosting in the even-numbered years), an arrangement that has seen many friendships forged over the course of the 50-plus years that this event has been run.



# Women's GOLF

Traditional golf clubs may still have a stuffy image in some quarters, but not Green Acres. Here new Members are made most welcome, are quickly integrated into Club life and soon feel like they have been a Member all their lives.



Nothing delights us more than to be able to say we are an all-inclusive Golf Club. Men and women, young and old, all enjoy an equal standing, and all are made to feel equally welcome.

Exclusive clubs like Augusta National Golf Club and St Andrew's may have only decided to permit female members in the past decade, but here at Victoria's friendly Club they have been a valued and integral part of the Club for many years. Our Women represent a third of the Membership and play an important part in Club life.

Ask any of our female members what makes Women's golf at Green Acres special, and they will likely say the camaraderie and social inclusiveness amongst the Membership. This culture of friendliness can be seen every Women's Day both on course and in the Clubhouse during post-golf gatherings.

Women enjoy all of the privileges of their male counterparts: pennant play, any number of Club trophies to compete for, many opportunities for social golf and equal access to the course. They are actively



supported by the Club and the Professional team, enjoying special Women's-only clinics designed to introduce newcomers to the game and improve the skill set of current members.

The round-robin format of pennant competition gives the opportunity not only to show off Green Acres at its best to visitors, but also gives our Members the chance to enjoy some of the other outstanding courses in the area.

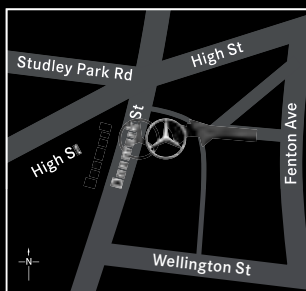
Additional to Friday and Sunday Pennant, our Women also enter Mid week Match Play, which is another interclub team competition which began in 2009.

The Women are renowned for the friendliness and enjoy a number of events during the year (such as Guest Days) which enables them to showcase the course to people who might not have experienced the thrill of playing at Green Acres before. Open competitions such as The Green Acres Challenge Bowl – an 18-hole Stableford team event – are also promoted actively.

The Women work tirelessly to support the Club's chosen charity for the year, relishing the opportunity to make a difference and give something back to those less fortunate.

Many Women members enjoy playing cards at Green Acres. The Bridge group on Thursdays continues to provide many Members who are unable to play golf due to illness or injury a connection with the Club and support from their friends.





Parking at rear, enter via Fenton Ave.

## Your Mercedes-Benz. Your Journey.

3 Point Motors, your local Mercedes-Benz retailer.

As a proud partner of Green Acres Golf Club, 3 Point Motors offers personalised service and remarkable expertise to support members in their need for New, Demonstrator or Certified Pre-Owned Mercedes-Benz vehicles Sales and Service.

With three locations across Fairfield, Kew and Epping, and winner of the Mercedes-Benz Circle of Excellence award in 2019, 2020 and 2021, 3 Point Motors is your best destination for your next Mercedes-Benz journey.

Where the shortest drive from Green Acres counts, visit our Kew showroom, and experience the 3 Point Motors difference for yourself.



Mercedes-Benz

**3 POINT**  
MOTORS

459-484 Heidelberg Road, Fairfield 9489 7777  
128 Denmark Street, Kew 9853 6669  
380 Cooper Street, Epping 9409 9999 LMCT 433

[www.mb3point.com.au](http://www.mb3point.com.au)  
[enquiry@3point.com.au](mailto:enquiry@3point.com.au)

## JUNIORS

Green Acres is a great supporter of junior golf. It is not just a question of tolerating our younger players, we value what they contribute to the Club and appreciate that if nurtured and given support, they are the potential core Membership of the future.



Junior Membership is offered at greatly reduced prices and all applications are expedited to ensure that young players are golfing as soon as possible.

Green Acres offers its Junior Members access to a wide range of additional services including Junior Clinics and the chance to represent the Club in Golf Australia Junior Pennant tournaments. Pennant provides young golfers with the opportunity to test their skills and learn matchplay competition in an environment that is fun and supportive. It gives the youngsters valuable experience of competitive golf and is a perfect steppingstone to the adult's pennant teams.

We also sponsor Junior Members who wish to play in external golfing events by paying for their competition entry fees.

While seeing our young golfers flying the Green Acres flag across the State and beyond makes us incredibly proud, players of all abilities are welcomed and positively encouraged. We are a family Club and it is equally rewarding to see fathers and sons or mothers and daughters enjoy a social game together.

The Club holds frequent Junior Golf Clinics for all levels of player aimed at improving their technique and their enjoyment of the game. Better players looking to take their game to the next level also have the opportunity to benefit from private lessons in our state-of-the-art teaching facility.

Membership application forms are available for download from our website, in person at the Club or by contacting the Club on (03) 9859 1294. Applications should be endorsed by a Proposer and Seconder who are current Club members.

Alternatively, if you do not know any current members, external referees such as schoolteachers will suffice. Referees are only required if you do not know an existing member of Green Acres Golf Club.



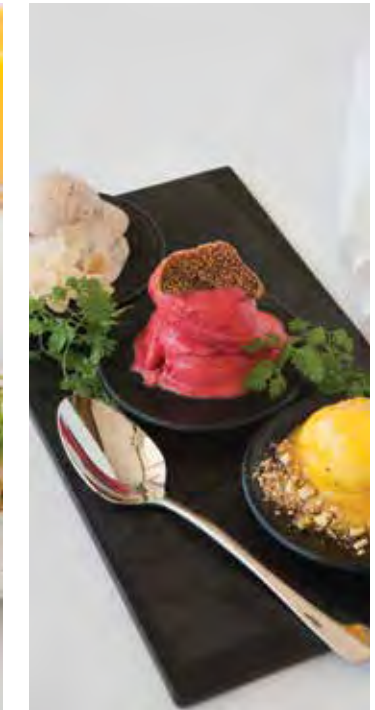
# Clubhouse & CATERING

The modern clubhouse and facilities at Green Acres ensures that the Clubhouse facilities match the quality of the course.

The purpose-built facility caters perfectly to the needs of Members, featuring a comfortable Members' Bar, Members' Lounge and Terrace all of which are designed to offer superb views over the course and down towards the Yarra River.

The Clubhouse has been warmly embraced by Members as a meeting place to discuss the putts that failed to drop over a quiet drink. With breakfast, lunch and dinner options, the Club has also become known as a comfortable and relaxed environment in which to entertain friends, family and associates.

Green Acres offers breakfast in the comfort of our beautiful Clubhouse after 9am on Saturday and Sunday mornings. Our Head Chef has prepared a superb menu featuring a variety of breakfast and brunch options with something for everyone.



Be it before or after your round, Green Acres is an ideal spot for long lunches and lazy afternoons with your family and friends.

The Club is open for lunch seven days a week. Bookings for large tables are appreciated, but are not necessary for smaller groups.

The Club offers two very different evening dining options for members and their guests.

During the summer Twilight Nine and Dine Season, Green Acres is open for dinner every Wednesday. Golfers playing in the Nine and Dine event are encouraged to invite their family and friends to join them for dinner afterwards.

Non-golfing members are also more than welcome to join us. The menu changes weekly but what doesn't change is the casual atmosphere and the great value for money.

As this is often a busy night, Members not playing in the Nine and Dine event are requested to book.

The Club restaurant also opens its doors most Friday nights for a more formal evening. Offering a more à-la-carte experience, Friday nights become an opportunity for our Head Chef to show off his culinary skills.



## Your mortgage partners for life.

Our team are highly experienced with 35+ years of experience in the mortgage, finance and property investment industry.

Based in Kew, we are also conveniently located to assist before or after your round of golf.

- **Residential Home Loans**
- **Vehicle Finance**
- **Investment Loans**
- **Seniors Equity Release**

### Get in contact.

(03) 9818 9716  
info@integrilend.com.au  
www.integrilend.com.au  
Suite 2, 700 High St, Kew East



**Melinda Nash**  
Finance Broker



**You should be able to play golf and get the most out of life, no matter how complicated your injuries or issues are.**

Staff are friendly, knowledgeable and the service is always personalised.

Start with a no obligation **FREE** full body assessment, to find out how you can live your best life.

**p. 9857 0644**

**admin@mdhealth.com.au**

737 High Street, Kew East, Vic 3102  
Rear of 124 James St, Templestowe, VIC 3106  
478-480 Rathdowne St, Carlton North, VIC 3054

## Weddings & FUNCTIONS

Located in a spectacular setting on the banks of the Yarra River, Green Acres Golf Club provides the perfect venue to host that special occasion.



Our magnificent, air-conditioned Clubhouse and private function rooms offer spectacular panoramic views out over the course and manicured gardens, an oasis of lush green surrounds that provide the perfect backdrop for your special day.

We are blessed with versatile function accommodation, which means we can create just the right atmosphere for the grandest of weddings or corporate events right down to the most intimate of family get-togethers.

Location is important too and we are ideally situated, just moments from Melbourne's CBD in the leafy suburb of Kew and easy to reach even if you have guests flying in from afar.

Our Executive Chef has designed a fantastic, contemporary menu with a range of choices to suit your style and budget. This is complemented by a wonderful selection of fine wines (we support small Australian producers) and premium beers served to you by our experienced and courteous staff.

The service really is second to none. Our friendly dedicated team will be on hand to make sure you and your guests have a day to remember. The success of your event truly means as much to our staff as it does to you. They really do care. And it shows.





We specialise in:

WEDDINGS

BIRTHDAYS AND ANNIVERSARIES

CELEBRATIONS OF LIFE

CORPORATE SEMINARS AND FUNCTIONS

CORPORATE GOLF DAYS

CORPORATE CELEBRATIONS

Whilst Green Acres is able to offer the premier function location in the region, our spectacular facilities do not come at a premium and you will find our range of function packages all represent excellent value. Our luxurious top-of-the-range Green Acres Wedding Package, for instance, features a delicious four-course menu and generous drinks package and also includes:

- Room hire
- A bridal suite
- Chair cover and sash
- A 5m x 5m dance floor
- A centre piece for each table
- A personalised menu for each table
- Crisp white tablecloths and napkins
- An Events Coordinator happy to accommodate all your needs



Whatever your hopes are for your big day, we will help you turn them into a reality.

Further details regarding weddings and functions packages are available to download from our website, [www.greenacresgolf.com.au](http://www.greenacresgolf.com.au).

For more information or to make an appointment for a tour of the venue and to discuss your special day in more detail, please call (03) 9859 1294 and speak to our Events Coordinator.



# Swimart Balwyn servicing your area

- ✓ **FREE** computerised pool water analysis & advice
- ✓ Great range of chemicals and equipment
- ✓ Equipment repair & installation
- ✓ Green pool recovery services
- ✓ Weekly, Fortnightly and Monthly regular pool care services
- ✓ Local and trusted business

## Balwyn

📍 303 Whitehorse Rd, Balwyn VIC 3103 📞 (03) 9836 8113 🌐 [swimart.com.au](http://swimart.com.au)

**Swimart 40**  
Celebrating 40 years of pool care



We can't help you with your putting...  
but we can help you hit your financial goals

Call us!  
9810 0700 | [info@banksgroup.com.au](mailto:info@banksgroup.com.au)

**B G**

**PRIVATE  
CLIENTS**



## Corporate GOLF DAYS

Here at Green Acres, we understand the importance of a successful corporate golf day - not only for your guests but also for your company. The experienced staff will take the pressure off you as we manage the logistics of your golf day.

The Club prides itself on offering a personalised service which will be very evident from the time guests arrive until they depart. This is proven by the fact that many corporate groups come back and visit us year after year, so much did they enjoy their experience.

A corporate golf day can be an affordable, enjoyable, and memorable experience. Some of the many benefits include:

- Relationship and team building
- Rewarding employees and stakeholders
- Impressing potential clients
- Networking opportunities
- Thanking existing clients for their valued custom





Green Acres is available for corporate golf days subject to application and availability on Mondays and Fridays.

We recommend Ambrose or individual Stableford competitions and depending on the number of players, we can offer one-tee, two-tee or modified shotgun starts. A booking of more than 80 players enables a shotgun start with guaranteed exclusive use of the course. This is very handy for post-event presentations as your golfers should all get back to the Clubhouse at roughly the same time.

On course competitions such as Nearest the Pin, Longest Drive, Straightest Drive and Beat the Pro can all be arranged.

Green Acres offers a wide range of services designed to make your corporate golf day as enjoyable for yourself as it is for your guests and whatever the size of your group you are guaranteed superb service and a great day out. We want your day to be perfect and are happy to tailor our packages and services to meet your individual requirements.

We offer complete event management from start to finish, featuring:

- Event and competition co-ordination
- Golf and catering packages
- Event management templates  
team sheets, results
- Clinics and on-course teaching by qualified  
teaching professional

- Golf trophies and prizes
- Professional photography service
- Entertainment bookings
- On-course corporate signage
- On-course hospitality service
- Golf Shop with full range of equipment  
for purchase or hire

The facilities at Green Acres are second to none and the off-course experience is as memorable and rewarding as the golf itself.

We can offer:

- Air-conditioned Clubhouse with terrace  
overlooking course
- Versatile function rooms with modern  
AV equipment
- Extensive menu selection for snacks, breakfast,  
lunch and dinner
- Full bar facilities
- Full change room facilities
- Dedicated Events Coordinator to facilitate  
your whole day

For further information regarding golf days at Green Acres Golf Club call our Events Coordinator on (03) 9859 1294.

# CORPORATE Membership

A Corporate Membership at Green Acres? We are the perfect venue to entertain clients, reward staff or find inspiration... An environment for both business and pleasure.

Here is an outline of some of the benefits Corporate Membership can bring:

### PLAYING RIGHTS

You will receive full 7 Day playing rights for up to a maximum of four nominees of your company. Gold, Silver and Bronze packages are available and differ to suit a range of needs.

### CORPORATE GOLF DAY

Your Corporate Membership package permits you to hold a corporate golf day. The corporate golf day includes a light luncheon or breakfast, golf and a two-course lunch or dinner. Refreshments on course and during the lunch or dinner are not included.

### NETWORKING OPPORTUNITIES

Green Acres has a strong Membership that provides members with valuable networking opportunities. In addition, the Club website has a Business Listing available to members on which you can advertise free of charge.

### TAX DEDUCTIBLE

Your Corporate Membership fees may be useable as a tax deduction. We do however recommend you seek your own financial advice from your Accountant.







#### USE OF THE CONFERENCE ROOM AND CORPORATE FACILITIES AT NO CHARGE

As a Corporate Member, your company has access to our function rooms to host meetings or functions with no room hire charge.

Should you decide to host a conference, business meeting or seminar with us, with a full suite of audio-visual equipment available and a wide range of delicious catering options to suit your needs, our professional team will ensure that your day is a success.

For further information regarding Corporate Membership, please contact the Operations Manager on (03) 9859 1294. To view our facilities or discuss individual requirements regarding conferences and meetings, please contact our Events Coordinator on the same number.



## How to FIND US

Green Acres is just over 10kms (or a 15-minute drive) away from Melbourne's CBD.

#### DIRECTIONS FROM THE CBD:

Take the Eastern Freeway towards Doncaster.

Exit at Chandler Highway and turn right towards Kew.

At the Willsmere Road roundabout, turn left.

Follow Willsmere Road around a sweeping right-hand corner and turn left into Belford Road.

Drive over the Eastern Freeway and turn left into Wattle Road.

Turn right in to Elm Grove.

Green Acres is located 200 metres down Elm Grove on your left-hand side.

Melway Reference 45 G2



#### PUBLIC TRANSPORT

Catch a Metro Tram 1 from St Kilda Road/ Southbank Boulevard towards East Coburg, alighting at Lygon St/Elgin St. A short walk east from here, catch a Metro Bus 200 towards Bulleen, alighting at Belford Rd/ Kilby Rd. From here the Club is about a 500-metre (eight minutes, perhaps ten with a golf bag on your shoulder!) walk away.



# CONTACT US

We look forward to welcoming you to Green Acres Golf Club. If you have any questions or would like further information, then please do not hesitate to contact us.

## GREEN ACRES GOLF CLUB

51 Elm Grove, Kew East,

Vic 3102, Australia

(via the Belford Road bridge)

Phone: (03) 9859 1294

Facsimile: (03) 9819 7586

Email: [reception@greenacresgolf.com.au](mailto:reception@greenacresgolf.com.au)

Email to Events Coordinator:

[functions@greenacresgolf.com.au](mailto:functions@greenacresgolf.com.au)

Website: [www.greenacresgolf.com.au](http://www.greenacresgolf.com.au)

## SOCIAL MEDIA

Keep up to date with all the latest happenings at the Club by liking us on Facebook, following us on Instagram or on YouTube.



**ORTHOSPORT**  
victoria

## 13 highly trained Orthopaedic Surgeons

*Specialists helping you  
get back to life*



Surgeons at **OrthoSport Victoria**  
specialise in the following areas:

- ✓ **Knee problems**
- ✓ **Hip problems**
- ✓ **Shoulder problems**
- ✓ **Foot & ankle problems**
- ✓ **Sports injuries**
- ✓ **Arthritis surgery**
- ✓ **Trauma & limb reconstruction**
- ✓ **Hand, wrist & elbow surgery**
- ✓ **Fractures & broken bones**
- ✓ **Joint replacement surgery**

## Orthopaedic Surgeons

**Professor Julian Feller** FRACS

**Dr Cameron Norsworthy** FRACS

**Dr Timothy Whitehead** FRACS

**A/Prof Harvinder Bedi** FRACS

**Dr Robert Steele** FRACS

**Dr Geoffrey Tymms** FRACS

**Dr Rohan Price** FRACS

**Dr Andrew Oppy** FRACS

**Dr Jason Harvey** FRACS

**Dr James Canty** FRACS

**Dr Soong Chua** FRACS

**Dr Lachlan Batty** FRACS

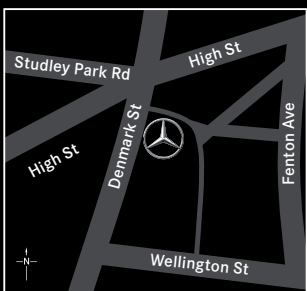
**Dr Julia Kirby** FRACS

**Ph: 9038 5200**

Level 5, Epworth Richmond 89 Bridge Road, Richmond VIC 3121

**[www.osv.com.au](http://www.osv.com.au)**





Parking at rear, enter via Fenton Ave.

## Your Mercedes-Benz. Your Journey.

3 Point Motors, your local Mercedes-Benz retailer.

As a proud partner of Green Acres Golf Club, 3 Point Motors offers award winning personalised service and remarkable expertise to support members in their need for New, Demonstrator or Certified Pre-Owned Mercedes-Benz vehicles Sales and Service.

With three locations across Fairfield, Kew and Epping, 3 Point Motors offers one of Victoria's largest ranges of new and pre-owned vehicles, making it your best destination for your next Mercedes-Benz journey.

Where the shortest drive from Green Acres counts, visit our Kew showroom, and experience the 3 Point Motors difference for yourself.



Mercedes-Benz

**3 POINT**  
MOTORS

459-484 Heidelberg Road, Fairfield 9489 7777

128 Denmark Street, Kew 9853 6669

380 Cooper Street, Epping 9409 9999 LMCT 433

[www.mb3point.com.au](http://www.mb3point.com.au)  
[enquiry@3point.com.au](mailto:enquiry@3point.com.au)